

SpagoBI and Autonomous Province of Bozen (Italy)

With SpagoBI Open Data drive territory management - The GeoBI.info portal of the Autonomous Province of Bozen.

Key Words:

PUBLIC PORTAL
OPEN DATA ANALYSIS
LOCATION INTELLIGENCE



Organization

Autonomous
Province of Bozen

Market

National

Status

Public Administration

Mission

Develop a public portal supporting the analysis of open data through geo-referencing techniques

Objective

Facilitate the collection and sharing of data and allow their integration and visualization through interactive thematic maps

Country

Italy

OW2 Project

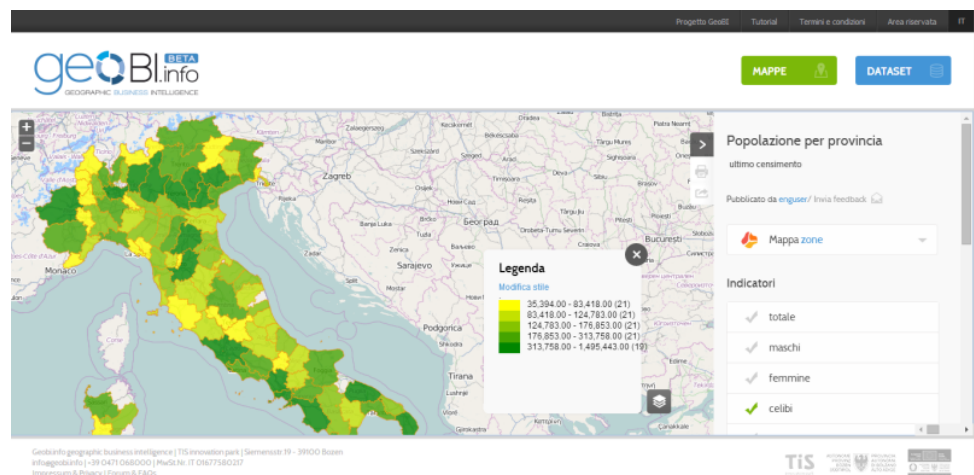
SpagoBI
European Regional
Development Fund (FESR)
Techno Innovation Park
South Tyrol (TIS)

“The GeoBI.info project offers direct and immediate access to data and statistics, and simplifies their visualization and analysis”.

Waltraud Deeg – IT council member at the Autonomous Province of Bozen

The GeoBI.info project

GeoBI.info project started with the idea that every territory has its own specificities that are closely related to its latitude. These specificities are crucial to allow initiatives to come true and become successful. *Which is the most affordable place to buy a house? In which district should I start a hotel? Is a new hotel necessary in this area? Where can I advertise my business most efficiently?* These are some of the questions that can be answered by exploiting the massive amounts of data put at the citizens’ disposal by organisations and enterprises – the so-called open data.



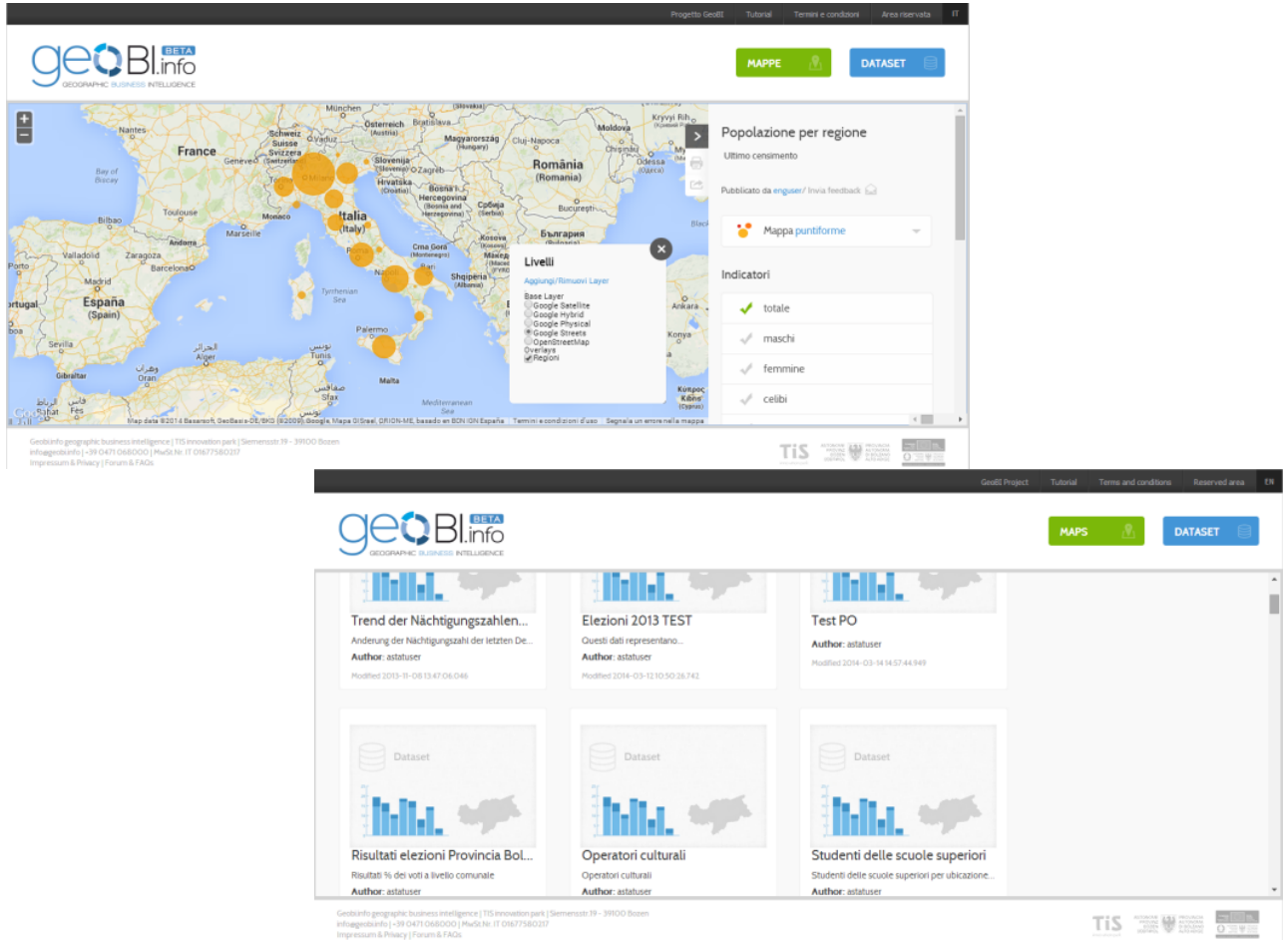
A public portal supporting the analysis of open data

Also thanks to the guidance and consultancy provided by Engineering Group’s SpagoBI Competency Center, the project offers a public portal supporting the analysis of open data through geo-referencing techniques. These data are shared by certified authorities, such as local governments and the Provincial Statistics Institute. GeoBI.info allows users to access these data, integrate them, build relationships and easily produce interactive thematic maps, gaining insight into the territorial distribution of the desired indicators. The GeoBI.info portal is available at: maps.geobi.info.

End-users can extract rich insights from rough data through integrated Self-service BI tools. GeoBI.info portal has a high level of usability, which encourages the use and spread of open data, thanks to a data processing and visualization tool, suitable for a wide range of users.

Data can be immediately displayed on interactive thematic maps. GeoBI.info merges statistical data and spatial data to create a single view. Thanks to this analytics capability – the **location intelligence** – patterns, trends and critical situations can be identified at a glance, with an immediacy and effectiveness otherwise impossible with traditional reporting tools.

GeoBI.info is totally build on open standards and open source software. All these features have been released in the standard version of SpagoBI suite. Therefore, anyone can use their own version of GeoBI.info portal on-premises and customize it according to their specific needs.



Key Benefits

- High level of usability
- Immediate data visualization on interactive thematic maps
- Totally build on open standards and open source software

Professional Support

spagobi@eng.it
www.spagobi.org

SpagoBI is provided by SpagoBI Labs of Engineering Group (www.eng.it), a global player in IT and the leading Italian software and services company which founded and manages the SpagoBI- suite, the 100% open source Business Intelligence and Big Data analytics.



OW2

OW2 Consortium
112-114 Bd Hausmann
75 008 Paris, FRANCE
mo@ow2.org

About OW2

OW2 is an independent industry community dedicated to developing open source code infrastructure (middleware and generic applications) and to fostering a vibrant community and business ecosystem. The OW2 Consortium hosts some one hundred technology projects, including ASM, Bonita, Chameleon, CLIF, DocDoku, Easybeans, Emerginov, Fractal, FusionDirectory, JOnAS, JORAM, JOTM, LemonLDAP:NG, Lutece, PetalsESB, Prelude, ProActive, SAT4J, Spagic, Spago4Q, SpagoBI, Talend Studio, Telosys, WebLab, XWIKI. Visit www.ow2.org



This work is provided under the Creative Commons Public License (Attribution-NonCommercial-NoDerivs 3.0 Unported - <http://creativecommons.org/licenses>). All names and trademarks are the property of their respective owners. DISCLAIMER: This documentation is provided "as is" and OW2 disclaims all implied warranties of any kind, including warranties of merchantability, non-infringement or fitness for any purpose. Furthermore, OW2 reserves the right to make changes in its contents at any time, without notice.