

Budget Control with SpagoBI

**SPAGOBI HELPS TURIN ASL 3 IN MANAGING BUDGET AND HEALTH DATA ANALYSIS FOR HOSPITALS AND TERRITORIAL DISTRICTS**

**Key Words :**

- Business Intelligence
- Integration
- Open source
- Health

*The TURIN ASL 3 chose SpagoBI to help innovating its budget card distribution system to all operational units of hospitals and territorial districts.*



**Organization**

Turin ASL 3

**Market**

Local Government

**Status**

Government body

**Mission**

To guard citizens' health

**Objective**

Prevention and cure in order to guard the health of citizens present in the territory.

**Country**

Italy

**OW2 Project**



/\* the Business Intelligence Free Platform \*/

**Turin ASL3**

In the Italian National Health Service, the local health care institutions are called ASL (Azienda Sanitaria Locale). Turin ASL 3 born in 1995; it manages two city hospitals (Amedeo di Savoia and Maria Vittoria) and covers the primary health care (ambulatory, general practitioners, consulting room, test house, ...) in two territorial districts including several quarters of the city of Turin. The aim of the ASL 3 is to manage activities of prevention and cure in order to guard the health of all citizens present in its territory.

Due to the rationalization of the Piemonte Region health care system, starting from 2008, ASL 3 will be unified with ASL 4, in order to create a new bigger local health care institution. The SpagoBI portal designed for the ASL 3 will be worked up at the new ASL, improving the use rate and defining new goals to be reached.

***The Need for Budget Card Distribution and Health data analysis***

The main need of ASL 3 was to distribute the budget card to all the hospitals and territorial operational units. Before SpagoBI introduction, this process was manually managed with paper document; this duty was requesting a considerable amount of time with a high engagement of human resources, who were blocked to face their decision-making activities.

Another goal was to extend the data analysis domain to the health information (admission, territorial outpatient clinic, drug distribution,...) in order to obtain markers and ratios, for supporting the operational units and the management in their decision-making activities.

## The Architecture of the System

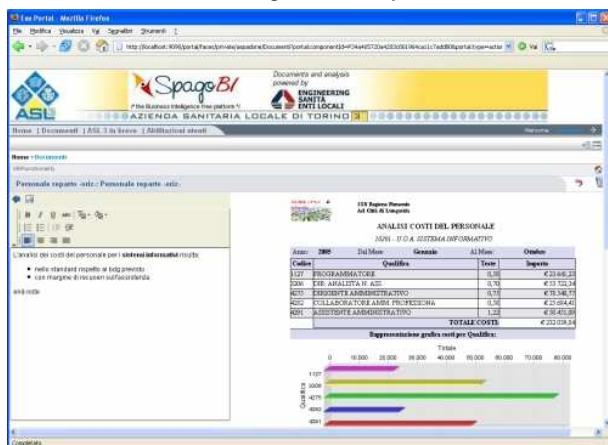
The solution imposes a significant behavioural model to outline the users of various sections (Management and Quality Control, Informative System, Operative Departments and Units and Enterprise Management) and diversifying by role the portal environment, the availability of analytical documents, the visibility of data. The analytical base supports various analyses (OLAP, reporting, QbE, dashboard), all the economic dimensions and the detailed information regarding the services and the admissions.

Nowadays, the portal is used by about 60 different operational units, with an high frequency of logins from the hospital wards and the territorial units.

Main analysis classes are:

- budget card and assessment work
- case mix studies
- reciprocal relation between outcome and absorbed resources
- marker and ratios
- trend studies

The queries to the DWH are managed both by static and interactive reporting.



The Budget Card Distribution System built on top of SpagoBI includes different key functional areas:

- Data extraction and transformation: ETL techniques are used to extract, transform and load the operational data in the business intelligence repository (DWH)
- Data analysis: OLAP and QbE techniques are used to analyse budget data on several economical dimensions (e.g. costs and revenues, accounting analytics)
- Publishing of analytical documents: data analysis are published in a standard and innovative portal environment according to different rights based on user profiles

## The Results

Implementing SpagoBI improves the decisional process:

- The budget management is now a completely automated and controlled process while in the past it was mainly manual and not integrated; a wider range of hospitals and territorial district has been reached by the process.
- Thanks to the behavioural model of SpagoBI, the right information is provided to the right people according to their own profiles.

## Professional Support



- Engineering Ingegneria Informatica is the core developer of the SpagoBI platform and the system integrator of the solution for Turin ASL 3.
- Engineering Sanità Enti Locali (Engineering Group) provides the technical environment, the domain competence, and the integration with its application suite.

## OW2

OW2 Consortium  
21 rue de Madrid  
75 008 Paris, FRANCE  
[www.ow2.org](http://www.ow2.org)  
[contact@ow2.org](mailto:contact@ow2.org)

## About OW2

Founded in January 2007 as a result of the merger of ObjectWeb and OrientWare communities, OW2 is an independent industry consortium dedicated to developing open source code middleware and to fostering a vibrant community and business ecosystem. Building on the legacy of ObjectWeb and OrientWare, OW2 federates more than one hundred organizations and 6000 developers in Europe, Asia and the Americas. OW2 hosts over one hundred technology Projects, including Lombos, Sync4j, eXo Platform, XWiki, SpagoBI and JOnAS. Several of the OW2 projects are combined into market-driven Initiatives, such as the ESB/SOA Initiative and the Business Intelligence Initiative, which facilitate their implementation by systems integrators, OEMs and end-users. A typical global open-source organization, OW2 aims to bring together grassroots communities across all continents through Local Chapters. [More information about OW2 is available at http://www.ow2.org.](http://www.ow2.org)