

OW2 BI Initiative

Complete open source BI solutions and new business opportunities

AOBI e BIT exchange network event
Aalborg, September 18th, 2009

Gabriele Ruffatti
Engineering Group
gabriele.ruffatti@eng.it



Agenda

- ❑ OW2 Consortium and its activities
 - Projects, Local Chapters, Initiatives
- ❑ Open Source Business Intelligence
 - OS BI overview
- ❑ OW2 OS BI stack
 - SpagoBI, Talend, Ingres
- ❑ OW2 business ecosystem
 - balancing no-profit and commercial activities
- ❑ OW2 BI Initiative: mission, goals, first results
 - deliverables & success stories
- ❑ SpagoBI success stories
 - OS BI in the real world
- ❑ Open Source BI opportunities
 - what's in it for you
- ❑ OW2 BI Initiative opportunities
 - what's in for you

Leading Open Source Middleware*

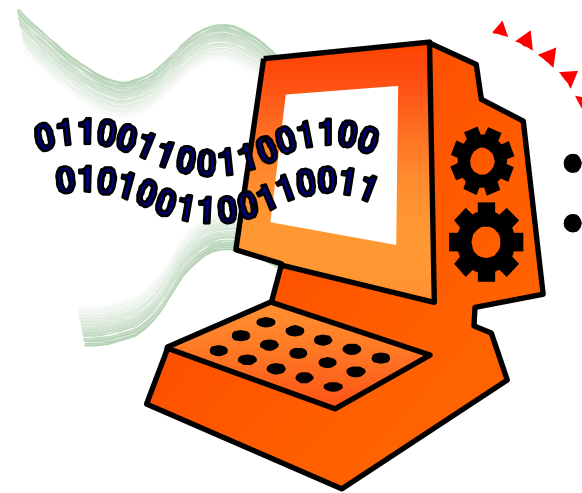
**A global *community* working together
to *develop open source middleware**
and to foster a vibrant *business ecosystem***



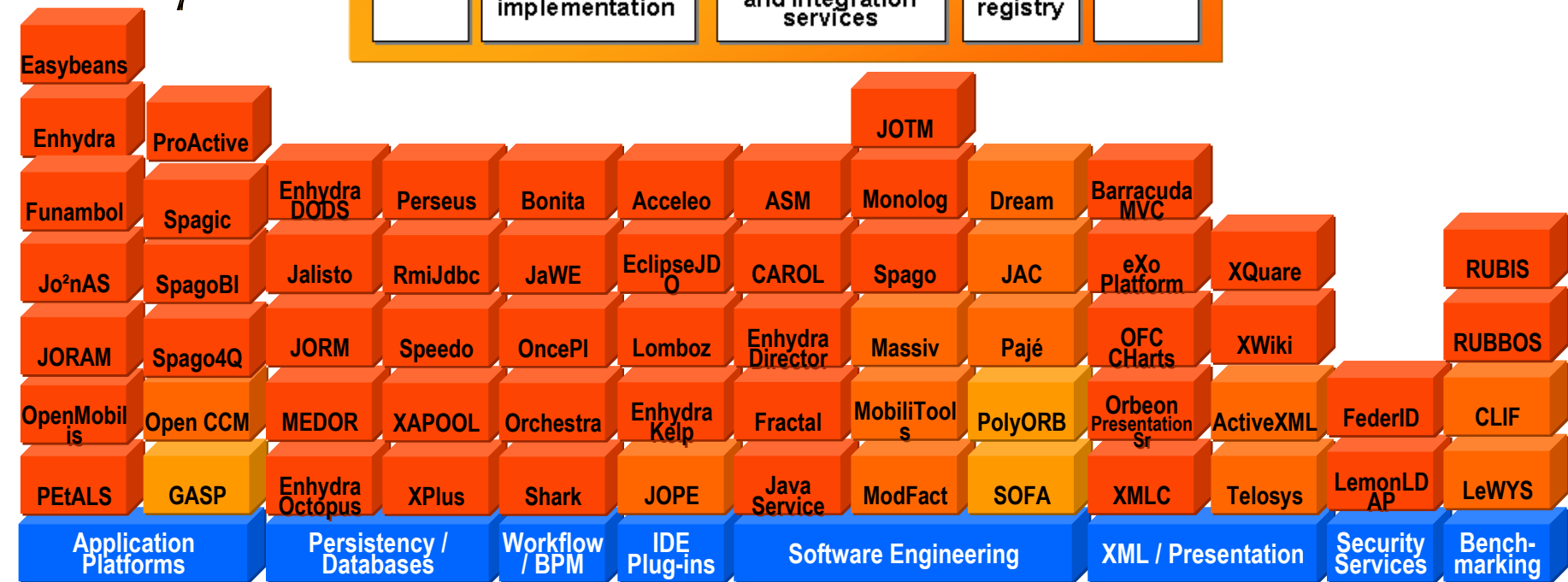
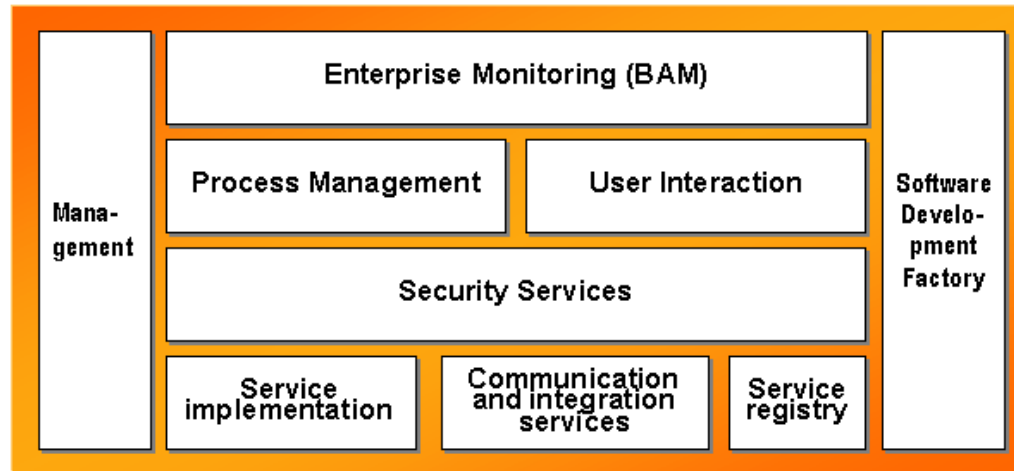
**Middleware at large, including tools for the development, deployment and management of distributed applications*

Projects = *Technology Innovation*

- ➔ A Project is a joint effort by an open group of developers from different origins aiming at developing innovative open source software



Projects: Current Code Base*



*Selection based on: downloads, most recent update, number of developers, Java

Local Chapters = *Global Governance*

- ➔ A Local Chapter is a group of OW2 members who join their efforts to promote the goals of the consortium within a community characterized by its *geography* or its *language*



Europe Local Chapter

Key Objectives

- ➔ Foster the OW2 **Research and Academic community** in Europe
- ➔ Help develop the Europe OW2 **Business ecosystem**
- ➔ Provide specific **support to local community** needs

The objectives are targeted through three Action Tracks

- 1) Academia Networking
- 2) Awareness and Promotion
- 3) Project Valorization

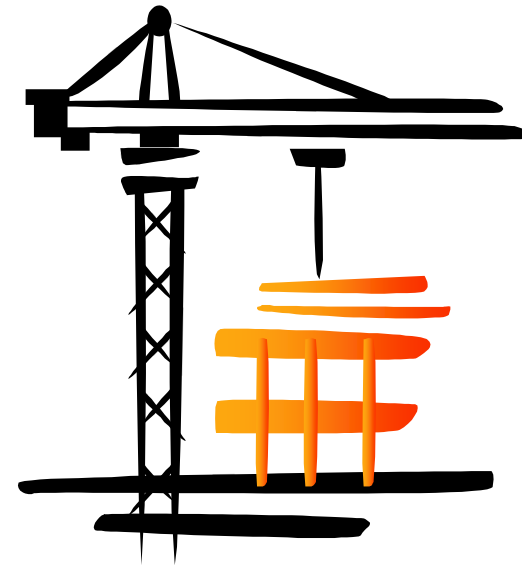


Initiatives = *Business Leverage*

➔ An Initiative is a joint effort by companies targeting the same market need.

➔ Initiatives aim at:

- facilitating technology integration between projects
- helping build business synergies between companies



OW2
BI Initiative

Open Source BI is here to stay

Gartner

Research

Publication Date: 16 April 2008

ID Number: G00156326

Who's Who in Open-Source Business Intelligence

Andreas Bitterer

Many of the commercial business intelligence (BI) vendors have a long history and large marketing budgets, resulting in high visibility and mind share. Their lesser known open-source counterparts, such as Actuate BIRT, JasperSoft, Pentaho, or Spago have, however, started to gain traction in the market, beyond simple report writers for small shops and even larger enterprises are becoming aware of available open-source BI options.

Key Findings

- Open-source BI is here to stay.

In many cases, the question is "when" to focus on open-source alternatives to traditional closed-source solutions, not "if" you should focus on them.

Gartner, Hype Cycle for Open-Source Software, 2005

Reasons to adopt OS BI

According to Gartner's analysis:

- Reducing costs
- Embed BI functionalities into existing applications
- Complement the current BI infrastructure to extend BI usage to more users

We could add more arguments:

- Flexibility
- Reactivity
- Innovation
- Different business ecosystem

The typical BI stack

- ❑ Database Management Systems
- ❑ Data Warehouse Platforms
- ❑ Extract Transfer Load (ETL) solutions
- ❑ Business Intelligence platforms:
 - Analytical tools
 - Document lifecycle management
 - Security
 - Integration

The OS BI stack

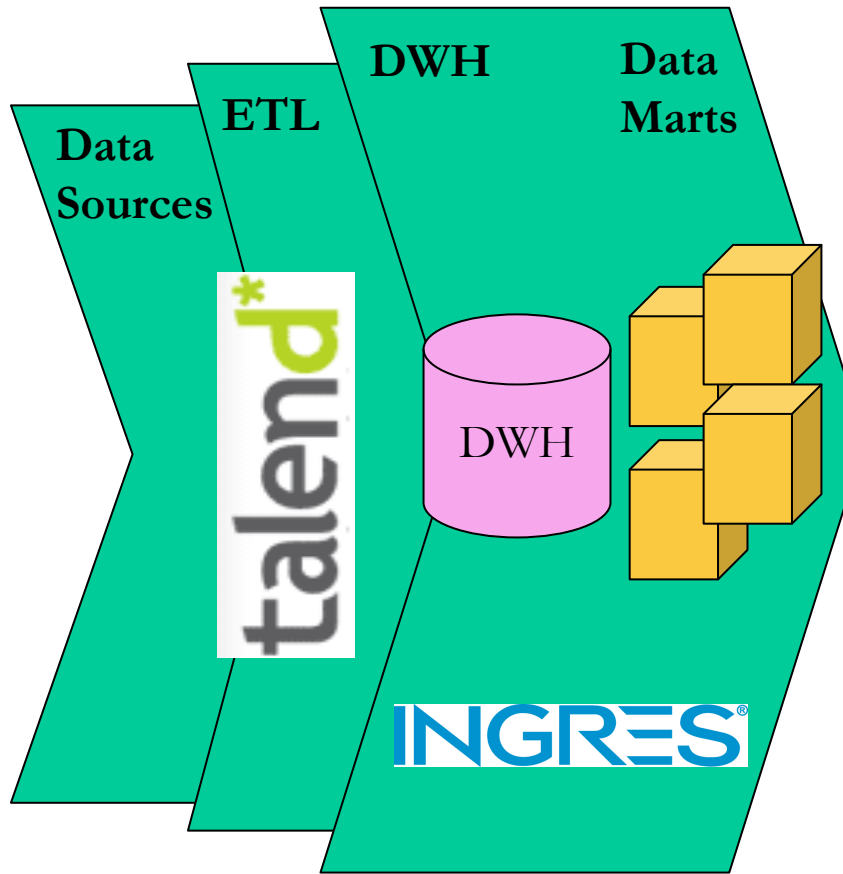
<p>PLATFORMS</p>	  
<p>OLAP</p>	 
<p>REPORTING</p>	 
<p>ETL</p>	 
<p>DWH</p>	  
<p>DBMS</p>	   

More details:


OSS BI Presentation in OW2 ELC Webinar Center Archive

<http://www.ow2.org/view/Activities/EuropeLocalChapterWebinars>

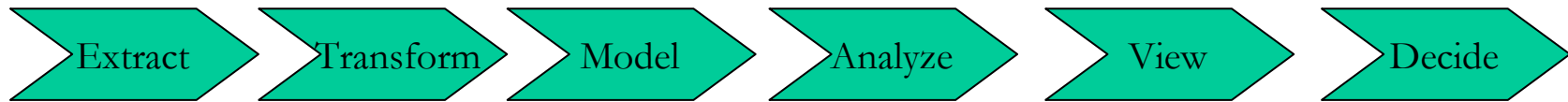
The OW2 OS BI stack



Collaborative BI Portal

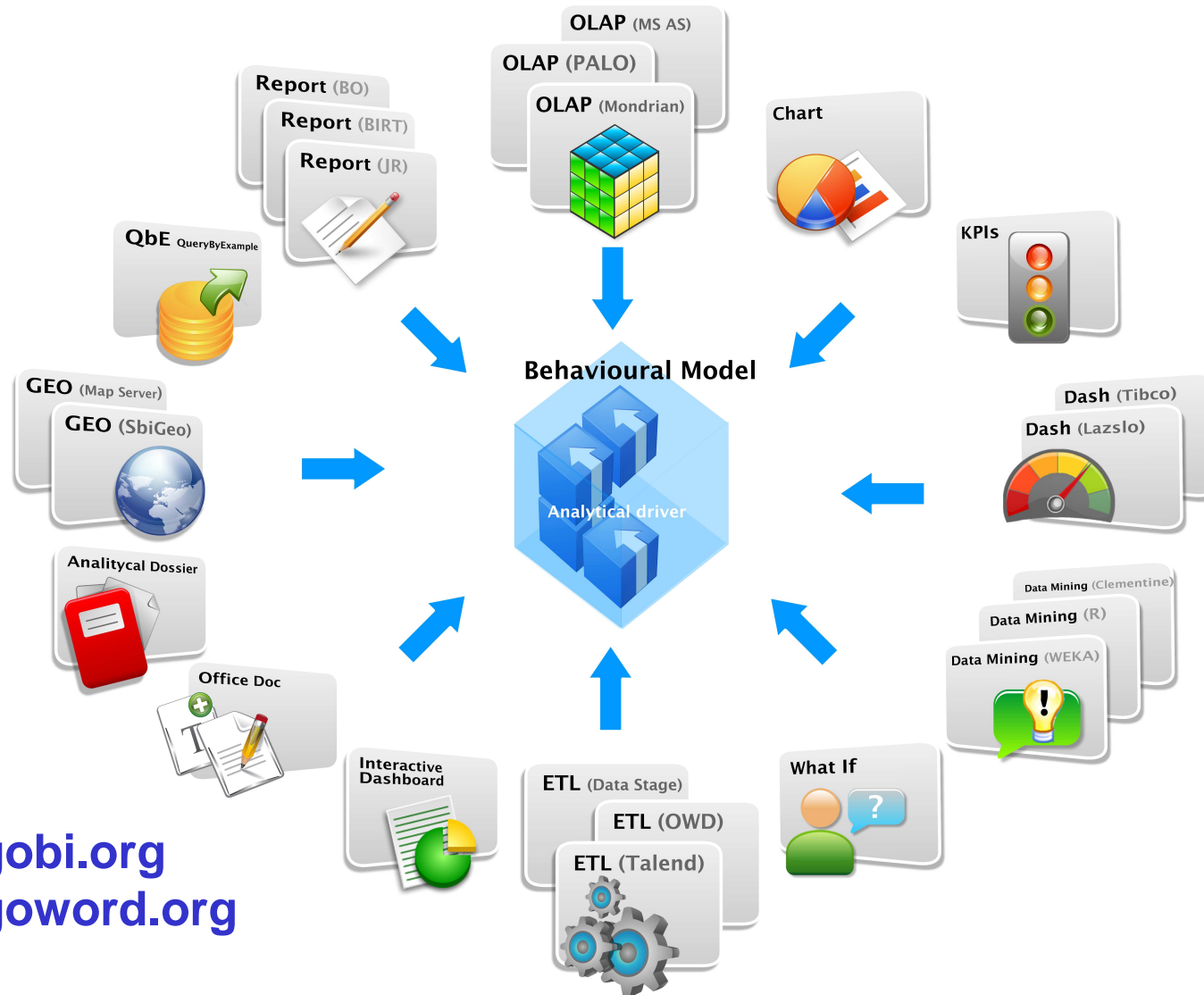


The screenshot displays the SpagoBI Collaborative BI Portal interface. It includes several windows showing data visualizations: a map of Europe, a bar chart, a table of data, and a detailed view of a specific data point. The interface is designed for collaborative business intelligence, allowing users to interact with and share data insights.



The OW2 OS BI stack

The totally free Open Source BI platform focused on openness, completeness, innovation and highly reliable performances.



www.spagobi.org
www.spagoword.org

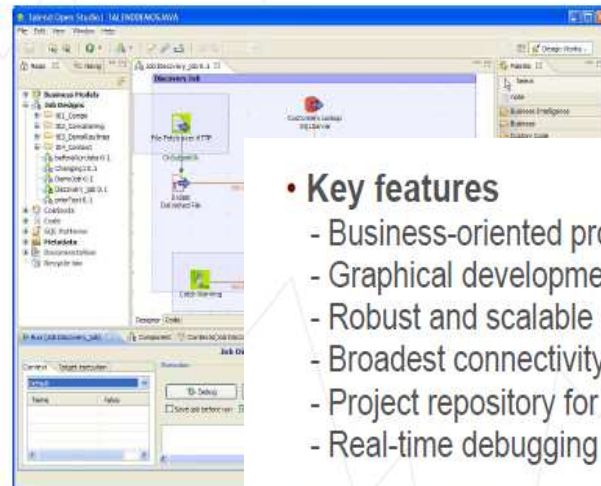
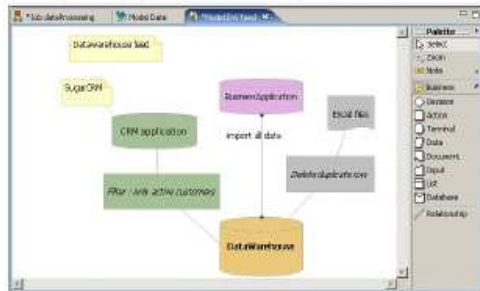
The OW2 OS BI stack

The Open Source Data Integration Platform focused on productivity, high performance and data quality

talend*

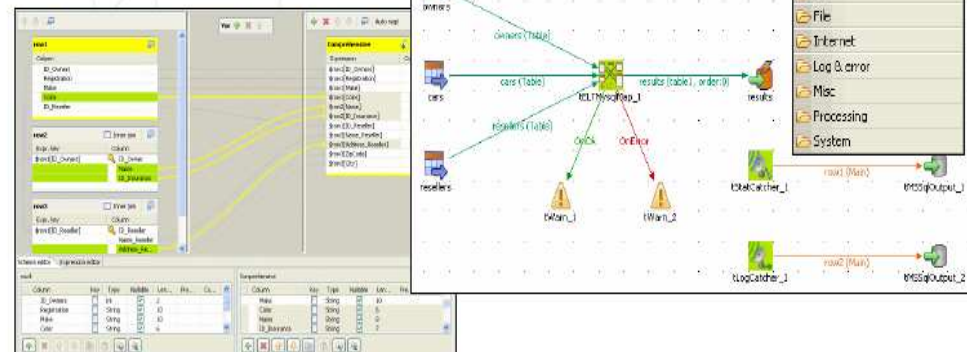
Talend Open Studio

- Industry's first open source data integration software comprises 3 major applications:
 - Business Modeler
 - Job Designer
 - Metadata Manager



• Key features

- Business-oriented process modeling
- Graphical development
- Robust and scalable execution
- Broadest connectivity to support all systems
- Project repository for design and execution
- Real-time debugging



www.talend.com

The OW2 OS BI stack

The Open Source Database Management System focused on reliability, security, scalability and ease of use



- ➔ Mature and feature rich, enterprise class **RDBMS**
- ➔ Ingres 2006, **OpenSource platform** with world-class support and services.
- ➔ Ingres Connectivity - ODBC, JDBC, .Net, Python, Perl, and PHP drivers. Enterprise Access and EDBC for non-Ingres data sources.

www.ingres.com

Entreprise and *Community* editions are equivalent : No option !

OW2: a business ecosystem platform

➔ Technical Services

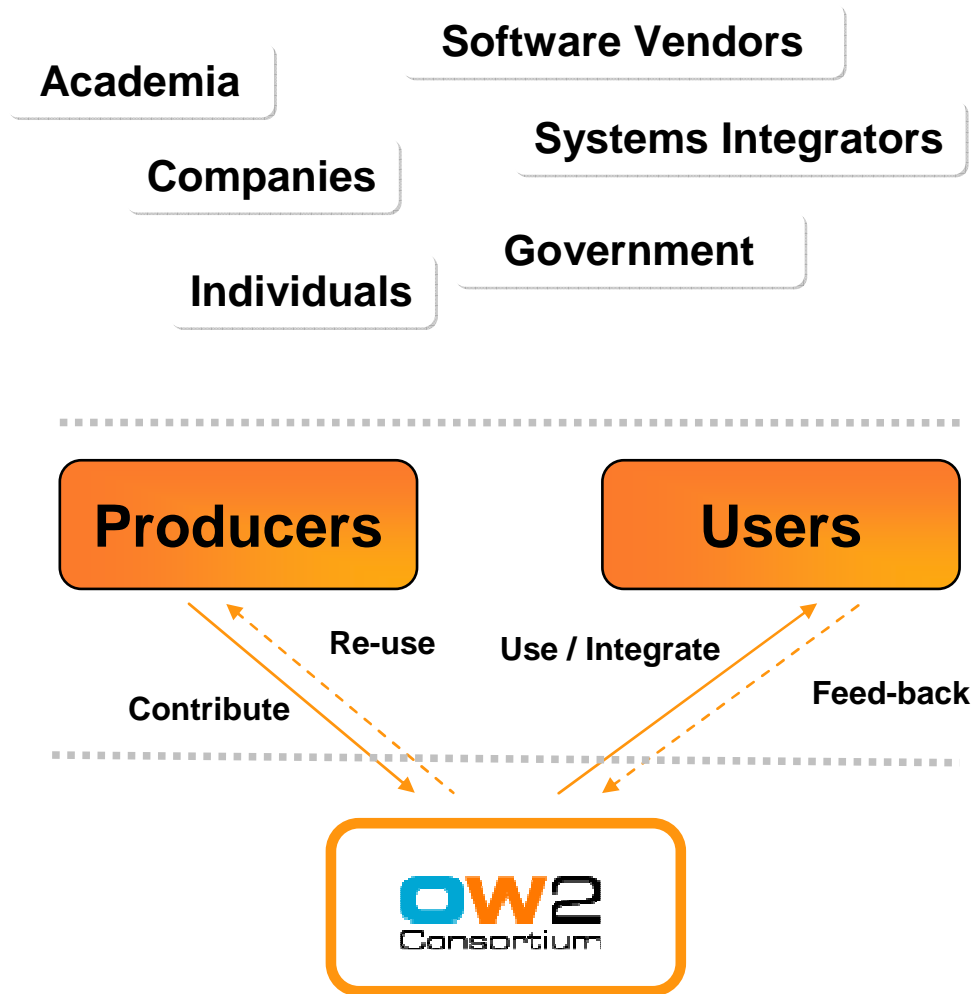
- Forge
- Mailing lists, Wiki, etc.

➔ Community Services

- Governance framework
- Activities

➔ Marketing Services

- Project promotions
- Awareness

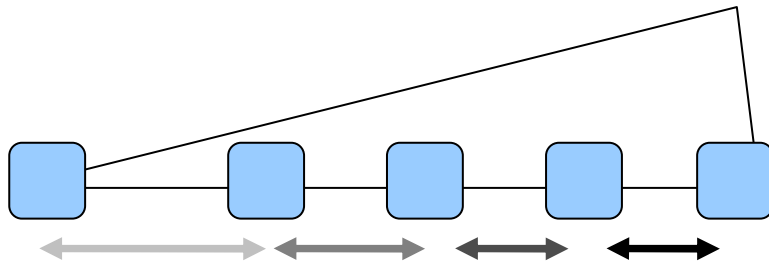


Business Ecosystem

Balancing no-profit and commercial activities

➔ Value Chain

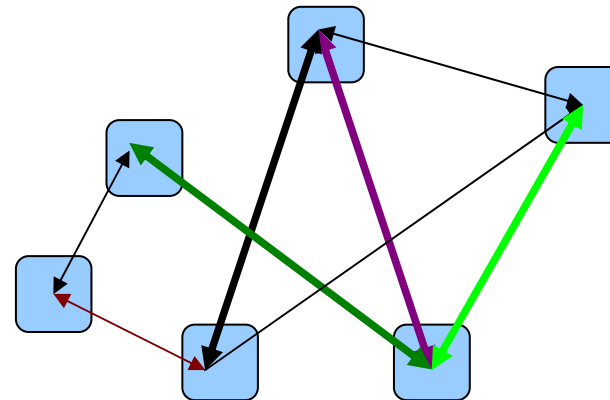
- Downstream flow of added value
- Vendor-Buyer relationships
- Quantitative rationale



Efficiency – Differentiation – Customer Ownership

➔ Business Ecosystem

- Value-added sharing
- Coopetition relationships
- Qualitative rationale



Network Externalities

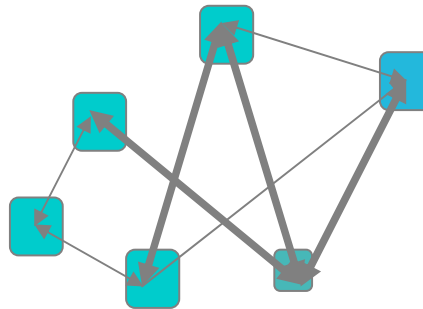
simultaneous **cooperation** (in non-monetary issues) and **competition** (in the same market) enable the complex relations to foster the ecosystem

OW2 Business Intelligence Initiative



VISION & GOALS

OS Business Intelligence qualification
BI investigation and research
Use cases and best practices

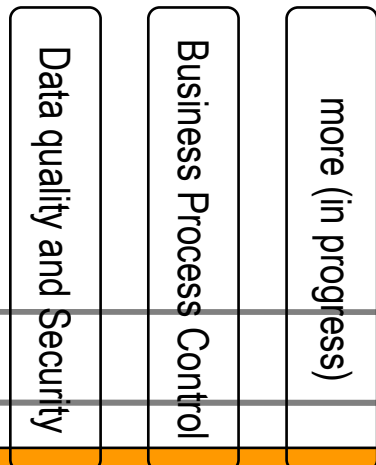


STAKEHOLDERS

Software Vendors
Systems Integrators
Academia
Enterprises
SMEs
Public Entities
Consultants

Open Source BI Business Ecosystem

TRACKS



Scenarios
Project Synergies
Innovation

Open Source BI Vision

**OW2
CODE BASE**



Why the OW2 BI Initiative

A joint effort set up to:

- **Improve** the coordination effort in the OS BI context
- **Increase** the use of OS BI solutions at enterprise level
- **Strengthen** connections between integrators, vendors, users and the research communities
- **Foster** innovative BI solutions and practices through research activities

OW2 BI Initiative PARTICIPANTS

- Engineering Ingegneria Informatica (Italy) (www.eng.it)
- Talend (France) (www.talend.com)
- Ingres (US, France) (www.ingres.com)
- Altic (France) (www.altic.org)
- Artemis Information Management (Luxembourg) (www.artemis.lu)
- ClaraVista (www.claravista.fr)
- DEIS University of Bologna (Italy) (www.deis.unibo.it)
- DTI University of Milan (Italy) (www.dti.unimi.it)
- DISI University of Trento (Italy) (www.disi.unitn.it)
- Individual members (fl AT flet.fr)



What is the OW2 BI Initiative



□ Mission

- to foster the growth of a business ecosystem in the BI domain

□ Goals

- to promote the development and evolution of a new, community-driven generation of OS BI tools
- to promote innovative methodologies for their adoption and application to distributed business processes

□ Activities

- integration of a full stack of OS BI solutions and tools
- promotion of a service network to support the entire stack
- kick-starting a community contributing to strengthen the current OS BI solutions
- creation of a research networks on BI topics promoting the development of a new generation of OS BI platforms

❑ OS BI State of the Art

- BI Initiative vision about OS BI
- Open methodologies and OS tools for BI

❑ BI & Business Process Management

- Main research issues in BI field
- How OSBI can answer

❑ Data quality and integration

- quality and security in data management and integration

❑ Presentation and personalization

- new paradigms for exploiting BI contents

❑ Technical track

- improve the OS BI stack

First deliverables

Non-technological deliverables

- OW2 BI Initiative Charter
- OW2 BI Initiative Manifesto
- Open Source BI adoption**
- OS BI: Open Research Issues**
- End users' scenario for OS BI: Statistical Data Life Cycle Management**
- End users' success stories**

Technological deliverables

- SpagoBI and Talend integration
- SpagoBI – INGRES bundle

<http://www.ow2.org/view/BusinessIntelligence/Documents>

Open Source BI Adoption



Author: University of Milan

Revision: Engineering, University of Bologna

- ❑ As increasing licensing costs, OSBI (Open Source Business Intelligence) platforms have been gaining attention
- ❑ Commercial OS companies have developed and imposed the concept of dual licensing
 - ✓ drive and manage the OS community to produce free high-quality products
 - ✓ offer an advanced customers service or additional features to those users who accept to pay the cost
- ❑ Dual licensing for OSBI products is seen as a guarantee of quality of the released software
- ❑ The deliverable presents an architectural view of OSBI platforms and discuss their adoption in some real world application scenario

Open Research Issues



Author: University of Bologna, University of Trento
Revision: Engineering, University of Milan

Proprietary platforms are commonly considered superior to OS platforms *but:*

- ❑ OS BI platforms will evolve much faster than commercial ones since they are not constrained by compatibility problems and rigid architectures.
- ❑ OS solutions can exploit the contributions of many programmers and designers as well as on the direct involvement of researchers that are willing to prototype on free platforms.
- ❑ OS solutions should not only replicate proprietary functionalities with a lower cost, but should also propose innovative functionalities according to the most sophisticated requirements of business users.
- ❑ Many research topics can be effectively implemented on OS platforms giving rise to innovative functionalities:
 - ✓ Evolution and versioning in DW schema
 - ✓ User preferences in OLAP queries
 - ✓ Pervasive and distributed BI
 - ✓ OLAM (On Line Analytical Mining) systems

End users' scenario for OS BI: Statistical Data Life Cycle Management



Author: Artemis Information Management SA
Revision: Engineering

Analysis of user needs and assessment of existing OS BI tools with particular regard to:

- Quality control
- Confidentiality treatment
- Statistical analysis
- Metadata management
- Diffusion and publication

End users' success stories

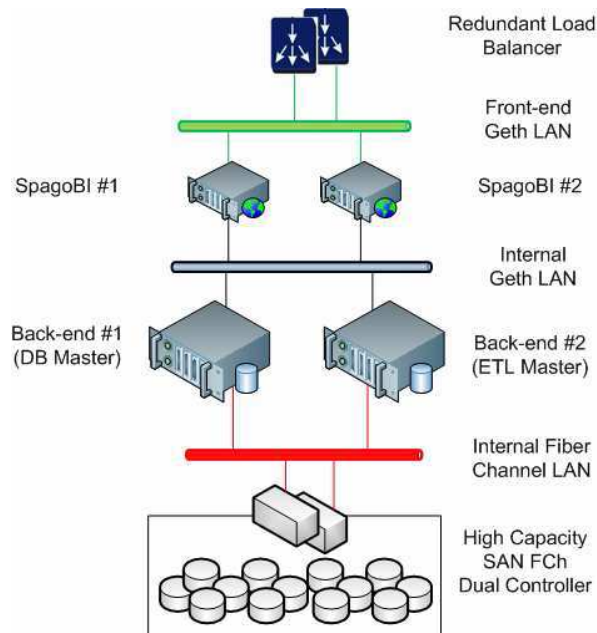


Author: Engineering

Business Intelligence Engine for the Services on Telephone Platforms

Analysis and reporting of services supplied on SMS, WAP and MMS channels by the mobile operators:

- SpagoBI allows data analysis using reports, summary graphics and dashboards
 - Talend Open Studio execute the ETL process and data normalization
- 3 million new records are daily loaded on the Enterprise DWH and kept on the system to allow the processing of historical data

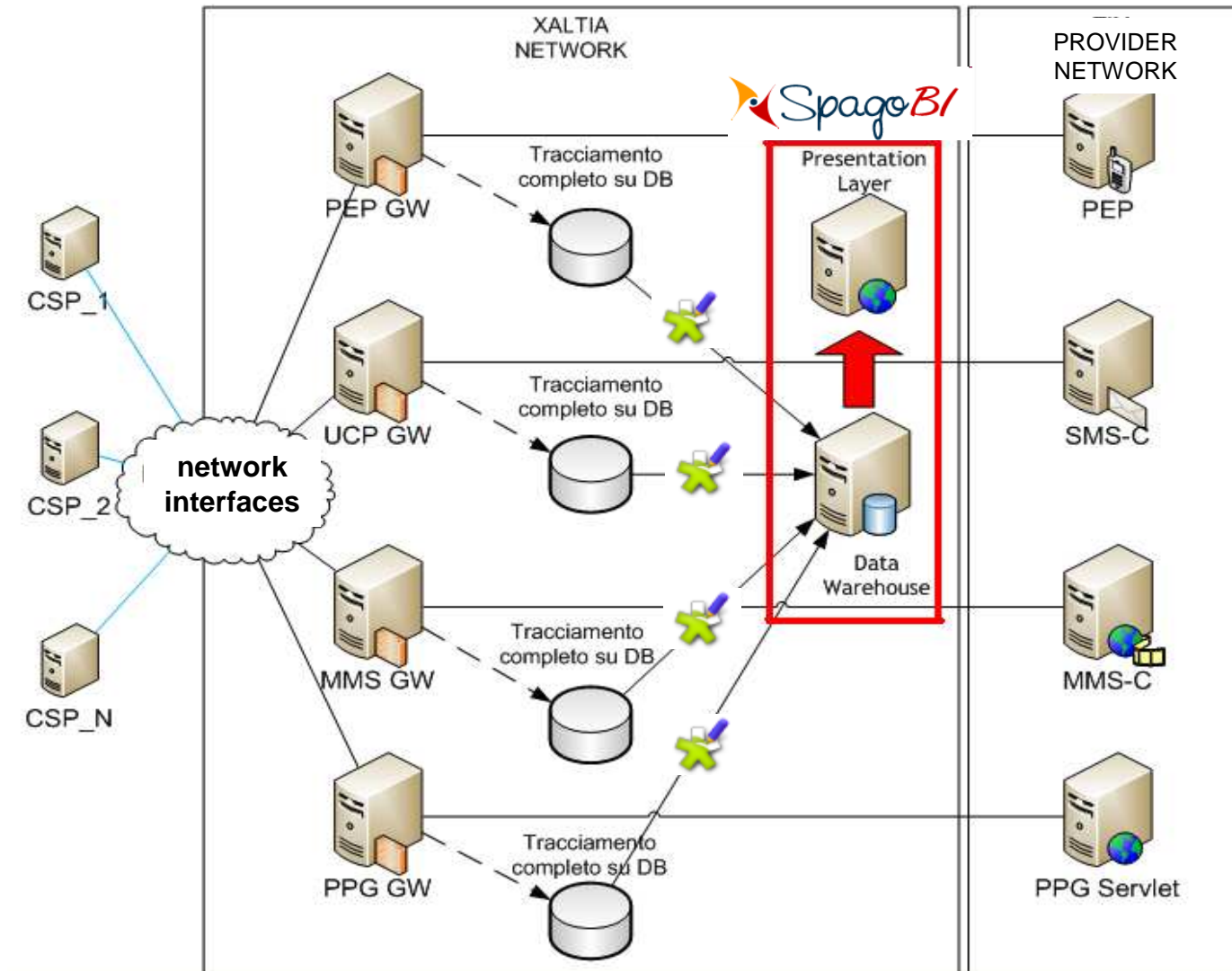


Indicatore	Numero	Recupero
Totale Traffico	17.233.871	2.922.123
Messaggi Tipo #1	3.584.793	357.887
Messaggi Tipo #2	656.720	412.517
Messaggi Tipo #3	1.838.645	0
Messaggi Tipo #4	7.491.979	636.936

Causale Errore #1	251736
Causale Errore #2	2976591
Causale Errore #3	162
Causale Errore #4	426
Causale Errore #5	131989
Causale Errore #6	1304
Causale Errore #7	43

SpagoBI success stories

Talend & SpagoBI in Xaltia project



SpagoBI success stories

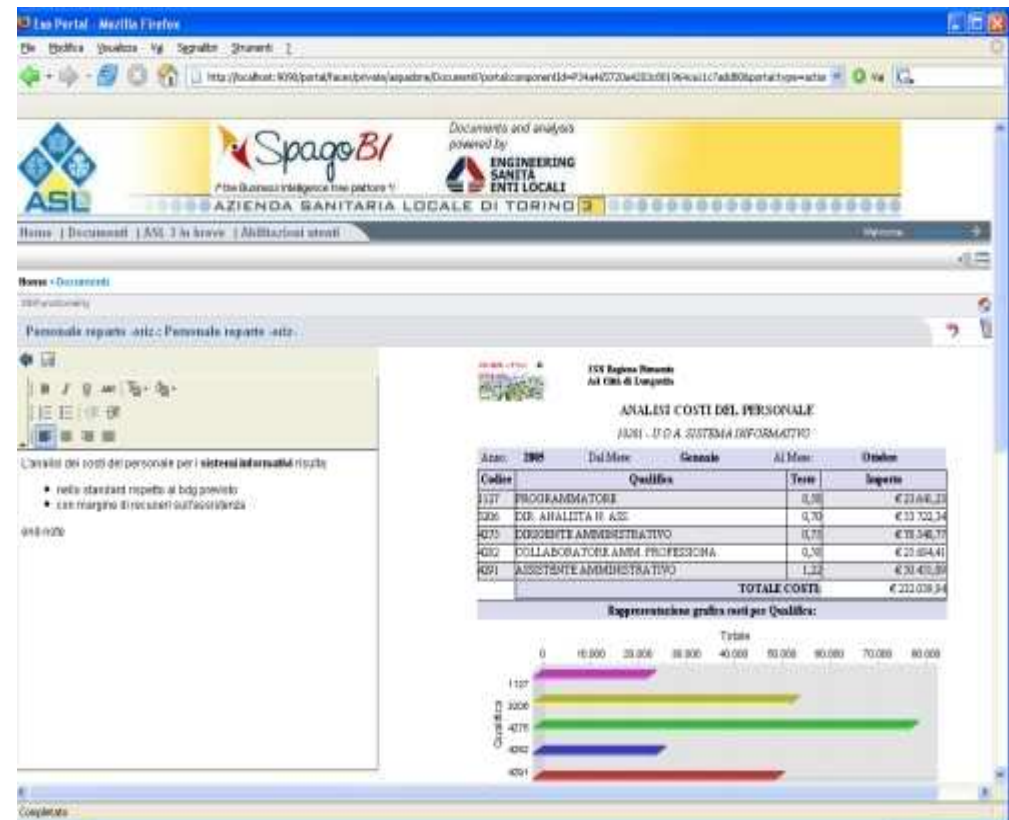
ASL 3 of Turin (Italy)



www.asl3.to.it

Engineering has used SpagoBI at ASL 3 of Turin (Italy) for the innovation of the distribution system of the budget cards towards all the operative units of the hospital garrisons and territorial districts, enriching them with detailed information on the allocated services and carried out admissions.

The solution imposes a significant behavioural model for outlining the users of various sections (Management and Quality Control, Informative System, Operative Departments and Units and Enterprise Management) and diversifying by role the portal environment, the available analytic documents, the data made visible. The developed analytic base covers all the economic dimensions with various analyses (OLAP, reporting, QbE) and evolves towards the garrison detailed information regarding the services and the admissions.



SpagoBI success stories

Chambre Commerce et Industrie Marseille Provence



www.ccimp.com

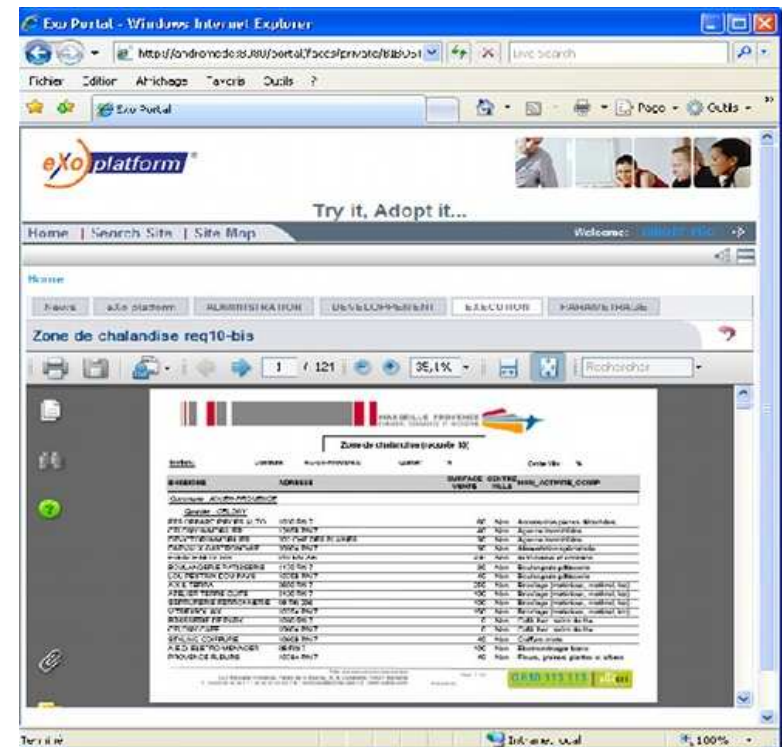
CCI Marseille-Provence is a 100% local community, committed to business activities and to the management of the 60,000 companies set on its territory. Among its IT general objectives, CCIMP has begun an open source developing process which is:

- progressive, aiming at continuously supporting its users,
- part of a niche market, where Open Source offering is highly efficient and reliable
- pragmatic and rational, through a deep analysis of users' needs and through a mixed open source and commercial offering.

The first projects concern the report development, based on data coming from the commercial establishments of its territory as well as on the results of an inquiry dealing with the sustainable environmental development. In both use cases, the reporting is related to parameterized default relations (regarding 40 environs).

SpagoBI platform, integrated with eXo and JasperReports solutions, has met the community's expectations. Moreover, the development time, usually accepted for this type of solutions, has been totally respected.

www.spagobi.org



SpagoBI success stories

The Italian Health Ministry project

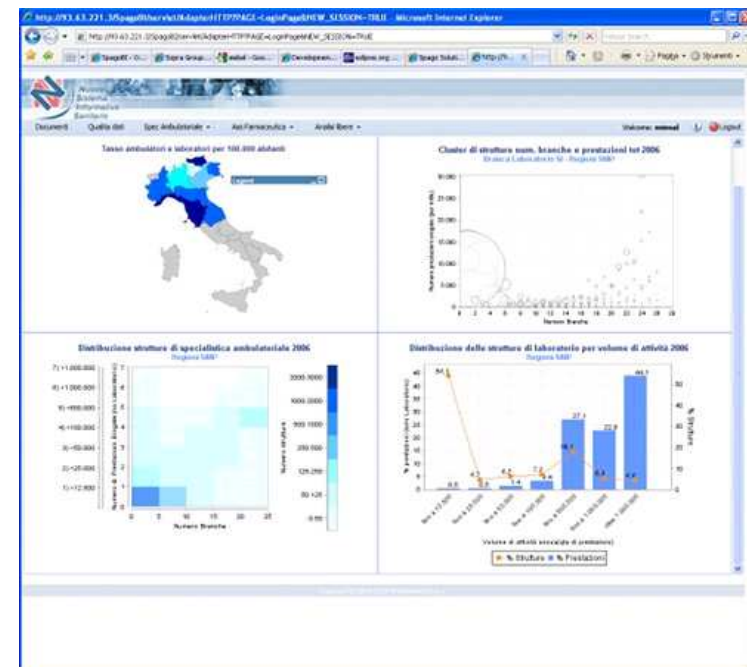


Ministero del Lavoro, della Salute
e delle Politiche Sociali

www.ministerosalute.it

The Health Division of the Italian Ministry of Labour, Health and Social Policies has adopted SpagoBI as a Business Intelligence platform for the realization of a decisional support system, named **'NSIS Cockpit'**. This Ministry is the Italian central institution of the National Health Service. It is responsible for human health care, the coordination of the national health system, health and safety at work as well as scientific research in the health field. This institution also works with Italian regions, in order to analyze and improve the local health realities.

The goal of the project is to monitor the essential aid levels of the national health service and to dynamically and intuitively analyse the services consumption and allocation, based on geographic and temporal axis. The NSIS Cockpit combines many tools and information in a single view, joining the basic data with the geographical information and relating the components each other. Moreover, it allows to directly set the analysis parameters, such as drill-down/drill-up navigation and to choose the measures of one's interest.



Open Source BI opportunities

Some key points:

- OS BI is here to “compete” with proprietary solutions
- Cost reduction (or cost shifting from license to the solution)
- Rapid reaction and flexibility
- Innovation

OS BI solutions are growing faster than proprietary ones because they look at the future more than they look at the past and start investigating new domains with high flexibility

You have to consider:

- Your goal now and in the future (your business model)
- The “open” solution (license, completeness, stability, maturity)
- The professional support
- The business model of the ecosystem (producer, supporting community, partnership program)

OW2 BI Initiative opportunities



Mid-term:

strengthen the first generation of OS BI platforms

Long-term:

foster the new generation of OS BI platforms

What's in it for you?

- the chance to drive the growth of OS BI solutions in a common direction achieving a great worth
- the involvement in research activities driving innovation
- a market and business opportunity

Join the OW2 Business Ecosystem

www.ow2.org

contact: Cedric Thomas (CEO) cedric.thomas AT ow2.org

Join the OW2 Europe Local Chapter

<http://europe.ow2.org>

contact: europe AT ow2.org

Participate in OW2 BI Initiative

<http://www.ow2.org/view/BusinessIntelligence/>

contact: bi-initiative AT ow2.org