



## ***OW2 BI Initiative***

# ***First deliverables***

**Open World Forum  
OW2 Tech Day  
December, 1th, 2008**

Stephane Padique  
*Ingres*  
Stefano Scamuzzo  
*Engineering Ingegneria Informatica*

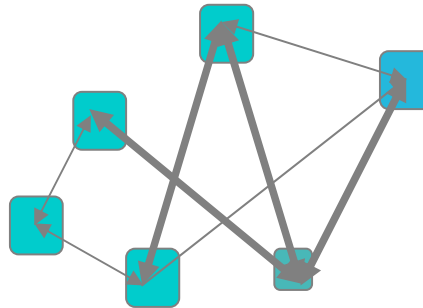


# The « BI Initiative » : A Business Ecosystem at Work



## VISION & GOALS

OS Business Intelligence qualification  
BI investigation and research  
Use cases and best practices



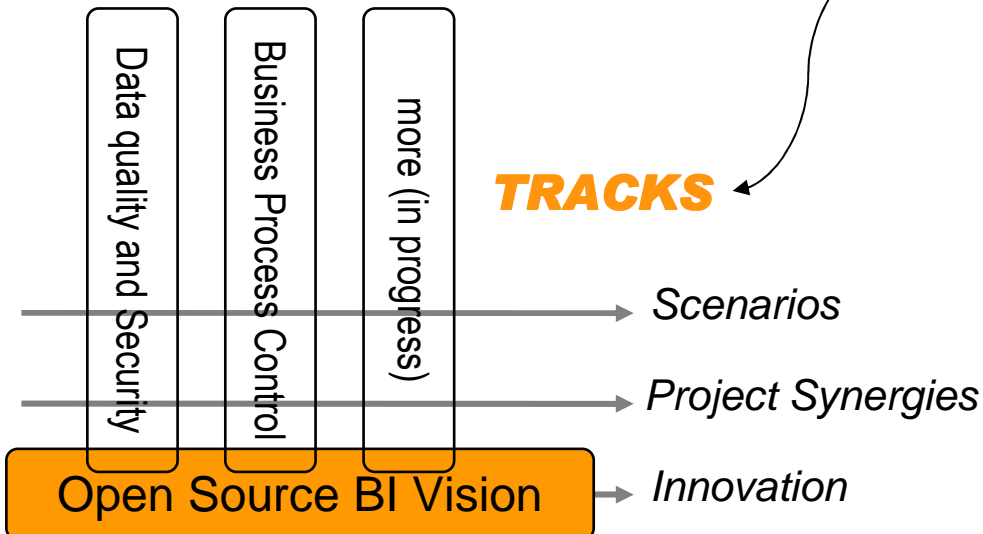
**Open Source BI Business Ecosystem**



## STAKEHOLDERS

Software Vendors  
Systems Integrators  
Academia  
Enterprises  
SMEs  
Public Entities  
Consultants

## TRACKS



**OW2  
CODE BASE**



# BI Initiative **PARTICIPANTS**

- Engineering Ingegneria Informatica (Italy) ([www.eng.it](http://www.eng.it))
- Talend (France) ([www.talend.com](http://www.talend.com))
- Ingres (US, France) ([www.ingres.com](http://www.ingres.com))
- Altic (France) ([www.altic.org](http://www.altic.org))
- Artemis Information Management (Luxembourg) ([www.artemis.lu](http://www.artemis.lu))
- ClaraVista ([www.claravista.fr](http://www.claravista.fr))
- DEIS University of Bologna (Italy) ([www.deis.unibo.it](http://www.deis.unibo.it))
- DTI University of Milan (Italy) ([www.dti.unimi.it](http://www.dti.unimi.it))
- DISI University of Trento (Italy) ([www.disi.unitn.it](http://www.disi.unitn.it))
- Individual members ([fl@flet.fr](mailto:fl@flet.fr))

## **BI INITIATIVE MANIFESTO**

- **Why the BI Initiative**
- **Objectives**
- **Main Activities**
- **Main Topics**
- **Deliverables**

***WE LEFT IN PCL 2008 ...***



***COMING SOON***

**...with first deliverables**

# ***CURRENT ACTIVITIES***

## **□ OS BI State of the Art**

- BI Initiative vision about OS BI
- Open methodologies and OS tools for BI

## **□ OS BI Research Issues**

- Main research issues in BI field
- How OSBI can answer

## **□ End user scenarios definition**

- Statistical data management
- CRM

## **□ Technical track**

- Talend – SpagoBI synergies
- Ingres – SpagoBI bundle

# FIRST DELIVERABLES

## Technological deliverable

- ❑ **Dec 2009:** SpagoBI and Talend integration
- ❑ **Jan 2009:** SpagoBI – Ingres bundle

## Non-technological deliverables (White papers)

- ❑ **Final draft:** OS BI: Open Research Issues
- ❑ **Jan 2009:** OS BI: Open Source Alternatives

## Non-technological deliverables (End-user scenario)

- ❑ **Final draft:** Statistical Data Life Cycle Management
- ❑ **Jan 2009:** End user scenario for OSBI: CRM

# SPAGOBI – INGRES BUNDLE



- ❑ **Simple and quick installation of all required components for a Business**

## **Intelligence Solution**

- ❑ **Provides a comprehensive OS platform aimed at delivering state of the art BI applications**

- ❑ **Best of breed approach**

- Mission critical enabled RDBMS (optimized, pre-configured)
- Comprehensive and advanced featured BI modules from ETL to Analysis
- Full featured demo application

- ❑ **Helps focusing on true business requirements, not infrastructure**

- Deploy in 10 minutes, keep workload on application value

- ❑ **Work ongoing by Engineering II and Ingres**

- ❑ **Bundles will be provided for Linux and Windows platforms**



# **SPAGOBI – TALEND INTEGRATION**



## **Demonstrator**

- 2 VM (Linux Debian, Windows)
- Talend Open Studio
- Talend Open Profile (data quality)
- SpagoBI

## **Tutorials**

- Step by step document to run the demonstrator
- Recorded demonstration

## **Other initiatives**

- Webinars, promotions, events
- Distant learning

# OS BI: Open Research Issues

Commercial platforms are commonly considered superior to OS platforms  
*but ...*

- ❑ OS BI platforms will evolve much faster than commercial ones since they are not constrained by compatibility problems and rigid architectures.
- ❑ OS solutions can exploit the contributions of hundreds of programmers and designers as well as on the direct involvement of researchers that are willing to prototype on free platforms.
- ❑ OS solutions should not only replicate commercial functionalities with lower costs for the final users, but should also propose innovative functionalities according to the most sophisticated requirements of business users.
- ❑ Many research topics can be effectively implemented on OS platforms giving rise to innovative functionalities:
  - ✓ Evolution and versioning in DW schema
  - ✓ User preferences in OLAP queries
  - ✓ Pervasive and distributed BI
  - ✓ OLAM (On Line Analytical Mining) systems

# OS BI: Open Source BI Adoption



- ❑ As increasing licensing costs, OSBI (Open Source Business Intelligence) platforms have been gaining attention
- ❑ COSS companies have developed and imposed the concept of dual licensing
  - ✓ drive and manage the OS community to produce free high-quality products
  - ✓ offer and advanced customers service or additional features to those users who accept to pay the cost
- ❑ Dual licensing for OSBI products is seen as a guarantee of quality of the released software
- ❑ The deliverable presents an architectural view of OSBI platforms and discuss their adoption in some real world application scenario

# Statistical Data Life Cycle Management

Analysis of user needs and assessment of existing OS BI tools with particular regard to:

- Quality control
- Confidentiality treatment
  - Statistical analysis
- Metadata management
- Diffusion and publication

# Conclusions

**Mid-term opportunities:** strengthen the first generation of OS BI platforms

**Long-term opportunities:** foster the new generation of OS BI platforms

<http://www.ow2.org/view/BusinessIntelligence/>