



# Leading Open Source Middleware

## Europe Local Chapter Proposal (v 0.18)

Michel Cezon, Luc Laurens, Stephane Ribas

INRIA

May 14, 2008



[www.ow2.org](http://www.ow2.org)

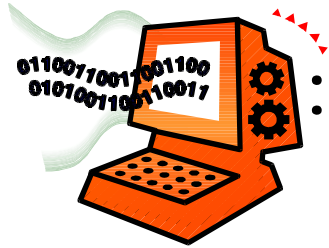


# Agenda

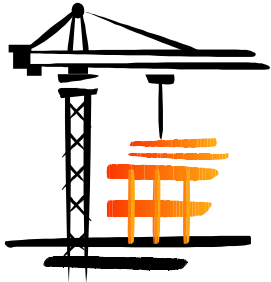
- ➔ **Context**
- ➔ **Territory**
- ➔ **Strategy and focus**
- ➔ **Organisation**
- ➔ **Work packages**
- ➔ **Roadmap and deliverables**
- ➔ **Next steps**

# Context

- ➔ **OW2 organisation in Local Chapter to boost local representation and activities**
- ➔ **Launch of China Local Chapter, discussion with Brazil Local Chapter**
- ➔ **Europe Local Chapter (ELC) proposal v0.18 to be discussed by OW2 EC and Board for approval during may 14-16 QM.**



- ➔ **Projects**
  - Technology Innovation

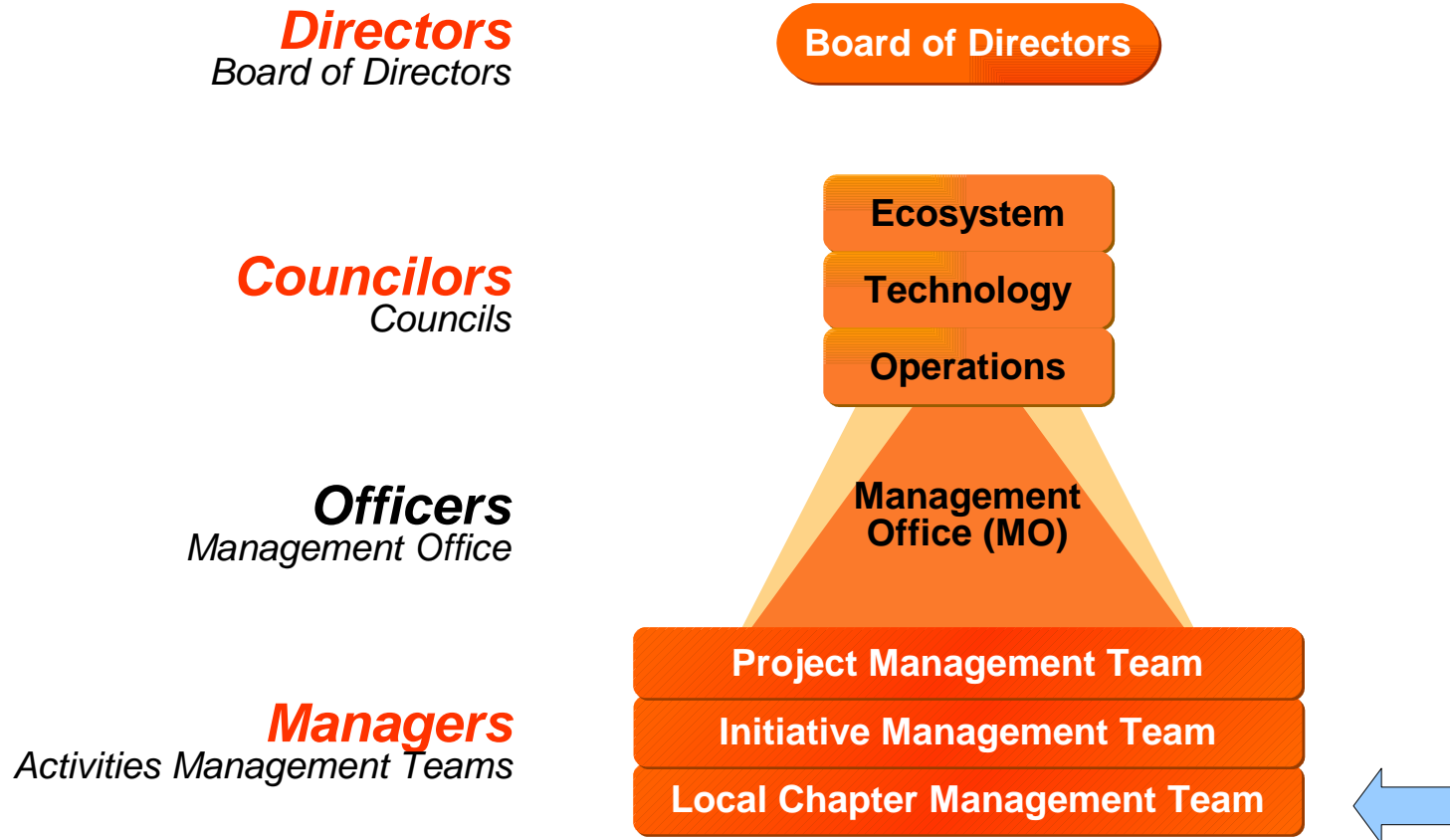


- ➔ **Initiatives**
  - Business Leverage



- ➔ **Local Chapters**
  - Global Governance

# The OW2 Governance Model



***Openness, Fairness, Trust, Transparency, Independence***

## ELC Territory

- ➔ **Incubation phase => European Union countries where OW2 members demonstrate direct interest and contribution to the LC.**
- ➔ **Ramp up phase => the territory may extend to other European countries but also neighbouring countries according to the nationality of participating members.**

# Strategy and focus

- ➔ **Academic and business community animation**
- ➔ **Liaison with EU communities and organizations  
(expand later to whole Europe & neighbouring  
countries of interest)**
- ➔ **Communication and promotion**
- ➔ **Tools, Services, Contributions to the code base**
- ➔ **Relationship with OW2 MO**

# Organisation

## ➔ Management team

- INRIA (lead)
- Bull, Charles University, European Dynamics, Fraunhofer Fokus, Thales

## ➔ Core team

- Up to 12 members actively involved in actions leadership

## ➔ Extended team

- All members which are registered on mailing list



## **WP1 of 3:**

# **Management, strategy and roadmap**

- ➔ Control and monitoring of the LC activities (with WP leaders)**
- ➔ Bookkeeping and quarterly and yearly reporting to the OW2 MO**
- ➔ Define charter, scope and strategy**
- ➔ Detail actions roadmap**
- ➔ Assess and recommend new activities, initiatives, tasks...**
- ➔ Continuous assessment on ongoing activities**

## **WP2 of 3: Linking with communities and organizations**

- ➔ Identification, approach and liaison with OSS communities relevant for OW2**
- ➔ Identification, approach and liaison with European or national organizations, and clusters relevant for OW2**
- ➔ Selection and analysis of funding instruments relevant for OW2 members to fuel research initiatives and new project proposals**
- ➔ Dissemination & communication actions**

## **WP3 of 3: Tools and services**

- ➔ Definition and development of shared tools and services for the LC community**
- ➔ Support Europe LC devoted pages on the OW2 Web site**

# Roadmap and deliverables

	2008	2008	2008	2009	2009	2009	2009	2010	2010	2010	2010
	Q2	Q3	Q4	Q1	Q2	Q3	Q4	Q1	Q2	Q3	Q4
<b>WP 1 Management, strategy and roadmap</b>											
T1.1 Control and monitoring of the LC activities (with WP leaders)											
T1.2 Bookkeeping and quarterly and yearly reporting											
T1.3 Define charter, scope and strategy											
T1.4 Detail actions roadmap											
T1.5 Assess and recommend new activities, initiatives, tasks...											
T1.6 Continuous assessment on ongoing activities											
D1.1 First draft for Strategy and roadmap report		◆			◆						
D1.1.x Updated Strategy and roadmap report				◆				◆			
D1.2 Interim report			◆								
D1.2.x Yearly report							◆				◆
<b>WP 2 Linking with communities and organizations</b>											
T2.1 Identification, approach and liaison with OSS communities											
T2.2 Identification, approach and liaison with European and national organizations, and clusters											
T2.3 Selection and analysis of funding instruments											
T2.4 Dissemination & communication											
D2.x Yearly progress report						◆				◆	
<b>WP 3 Tools and services</b>											
T3.1 Definition and development of shared tools and services											
T3.2 Support Europe LC devoted pages on OW2 Web site											
D3.1 First release of tools and services platform			◆								
D3.x Subsequent releases of tools and services platform				◆	◆			◆			◆

## Next steps

- ➔ **EC and Board approval --> May 14 & 15**
- ➔ **Official launch at GA --> May 16**
- ➔ **Europe Local Chapter Kickoff => June 2008?**

**Thank you!**

***www.ow2.org***

For more informations  
Please contact  
Michel Cezon  
michel.cezon [at] inria.fr

# ELC Management team

First Name, Last Name	Org.	Phone	Email	Role
Gerd Schuermann	Fraunhofer FOKUS	+49 30 3463 7213	<a href="mailto:Gerd.Schuermann@fokus.fraunhofer.de">Gerd.Schuermann@fokus.fraunhofer.de</a>	
Gregory Lopez	Thales	+33 1 69 41 59 06	<a href="mailto:gregory.lopez@thalesgroup.com">gregory.lopez@thalesgroup.com</a>	Contribute to WP2
Jean-Pierre Laisné	BULL	+33 1 30 80 72 89	<a href="mailto:Jean-Pierre.Laisne@bull.net">Jean-Pierre.Laisne@bull.net</a>	
Jens Fromm	Fraunhofer FOKUS	+49 30 3463 7167	<a href="mailto:Jens.Fromm@fokus.fraunhofer.de">Jens.Fromm@fokus.fraunhofer.de</a>	Support Gerd Schuermann
Julie Marguerite	Thales	+33 1 69 41 59 70	<a href="mailto:Julie.marguerite@thalesgroup.com">Julie.marguerite@thalesgroup.com</a>	Support Grégory Lopez
Luc Laurens	INRIA	+33 4 76 61 53 91	<a href="mailto:Luc.Laurens@inria.fr">Luc.Laurens@inria.fr</a>	Support Michel Cezon with a focus on Business contact
Panagiotis Rentzepopoulos	European Dynamics	+30210 80 94 500	<a href="mailto:Panagiotis.Rentzepopoulos@eurodyn.com">Panagiotis.Rentzepopoulos@eurodyn.com</a>	Focus on dissemination activities in SE Europe region
Petr Tuma	Charles Univ.	+420-221914267	<a href="mailto:tuma@nenya.ms.mff.cuni.cz">tuma@nenya.ms.mff.cuni.cz</a>	
Stéphane Ribas	INRIA	+33 4 76 61 55 98	<a href="mailto:Stephane.ribas@inria.fr">Stephane.ribas@inria.fr</a>	Support Michel Cezon with a focus on Academic contact