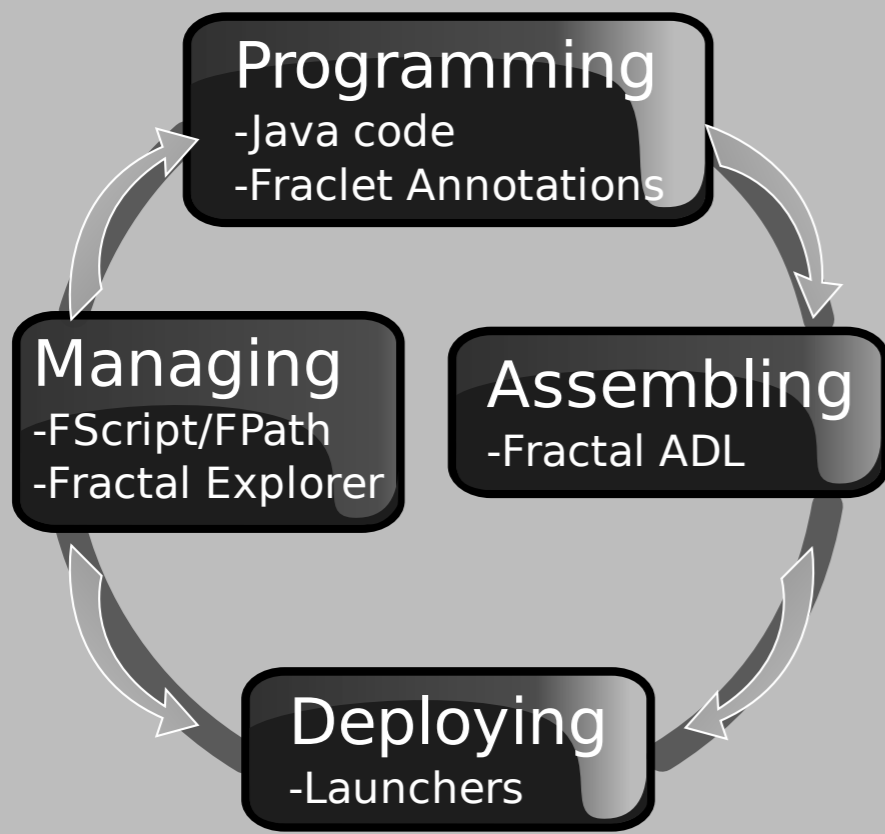


# F4E

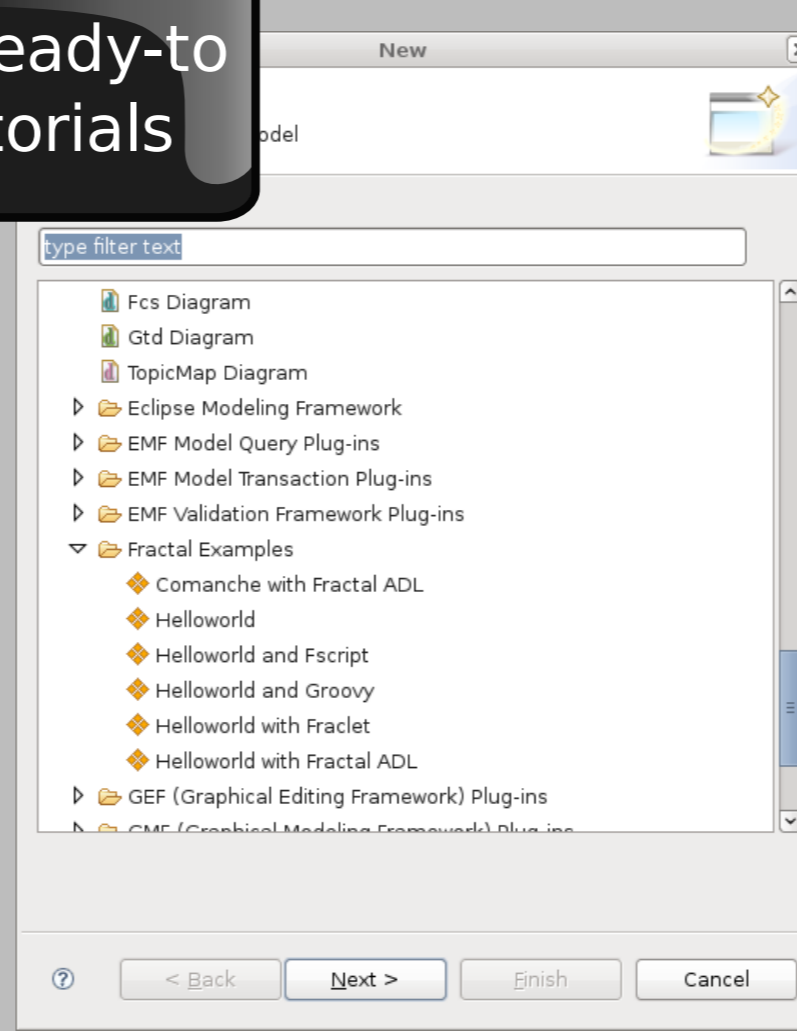
## A Fractal Development Environment for Eclipse

### Fractal Development Life-cycle



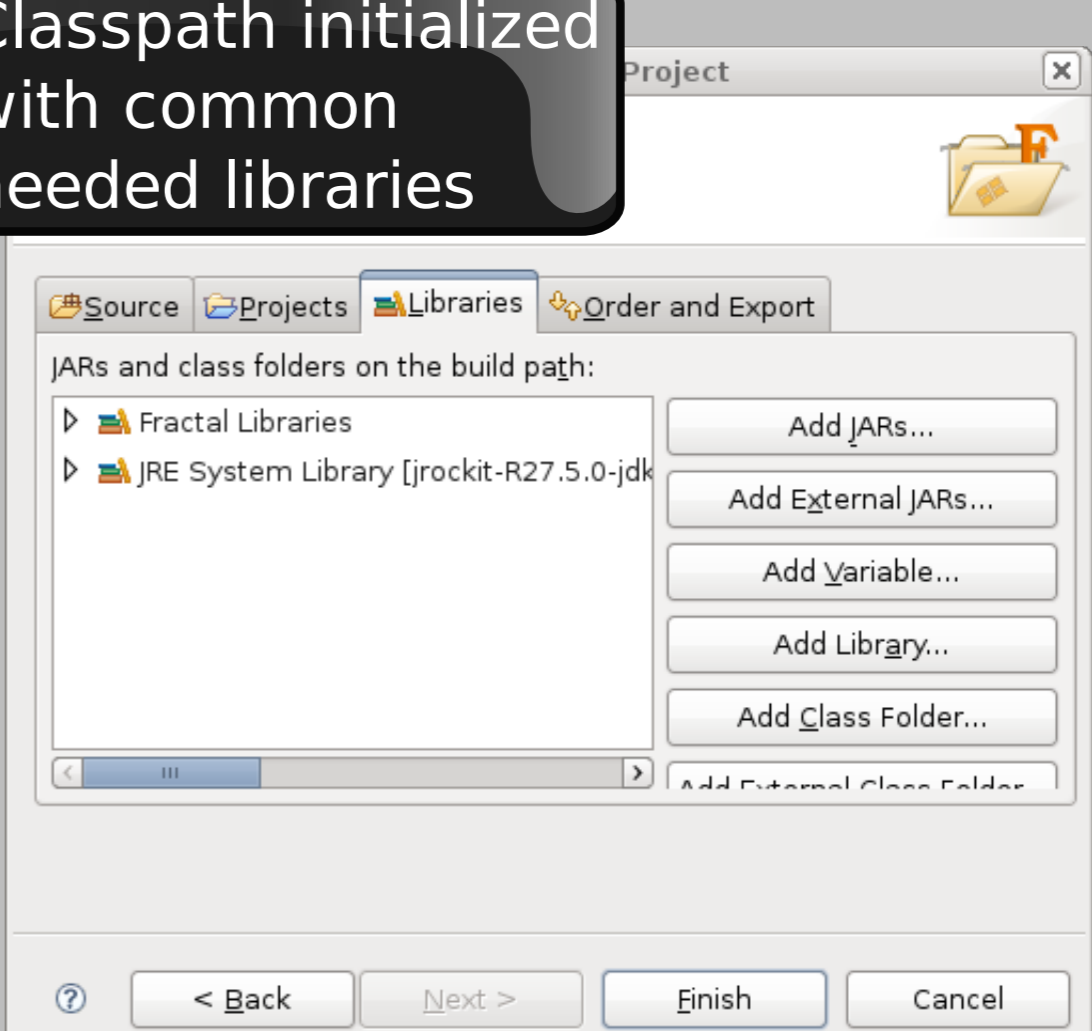
### Tutorials

Set of ready-to-use tutorials



### Wizards/Libraries

Classpath initialized with common needed libraries



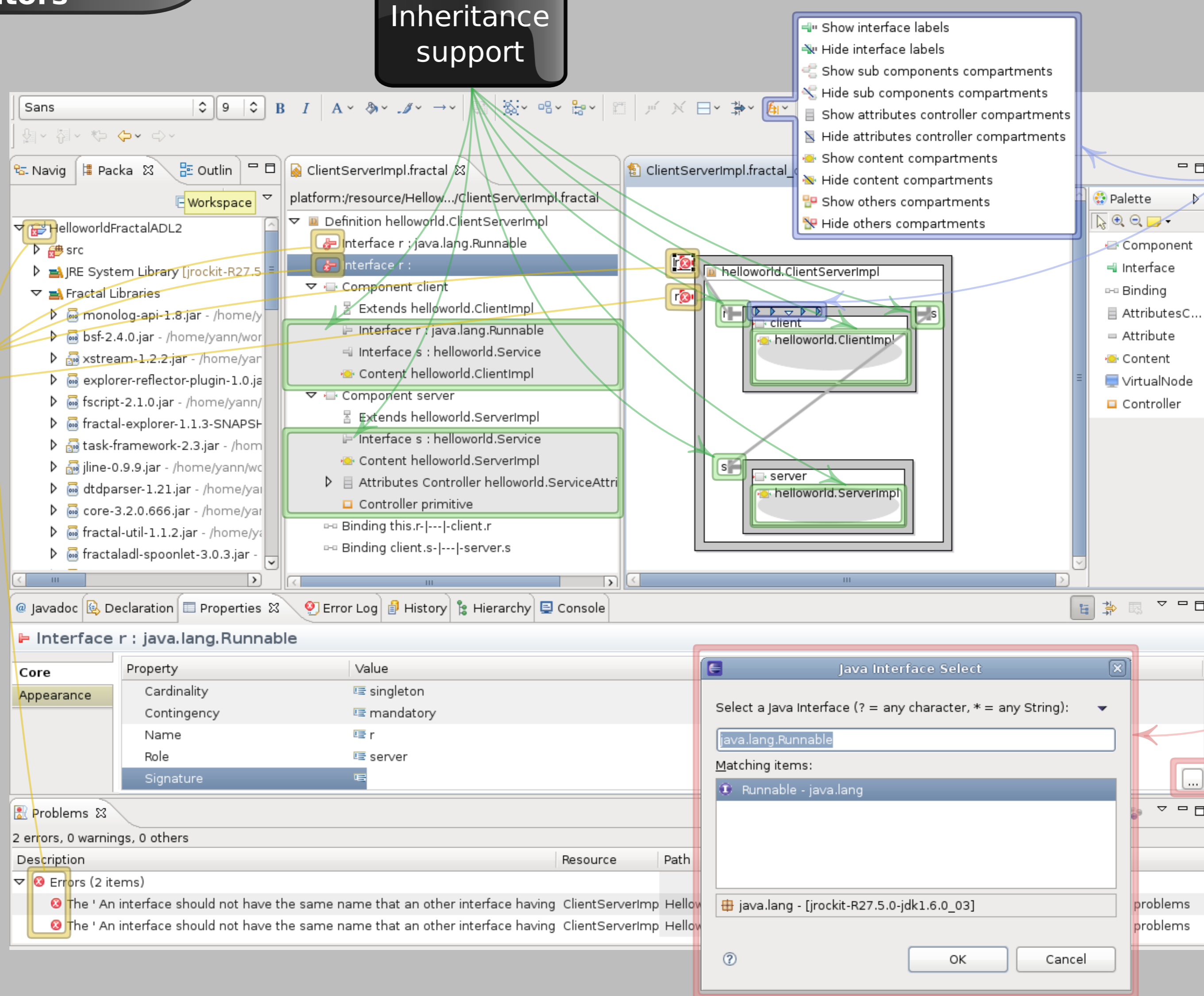
### Fractal ADL Editors

Inheritance support

Basic filters

Validation support

Navigation facilities by double clicks  
adl<->java  
adl<->adl



Completion support

### Launchers

FScript console can be launched with the project classpath in order to load our components and reconfigure them at runtime

Fractal ADL files can be launched directly in the console or within Fractal Explorer to visualize the application at runtime

