



OW2 BI Initiative

First deliverables

**Open World Forum
OW2 Tech Day
December, 1th, 2008**

Stephane Padique
Ingres
Stefano Scamuzzo
Engineering Ingegneria Informatica

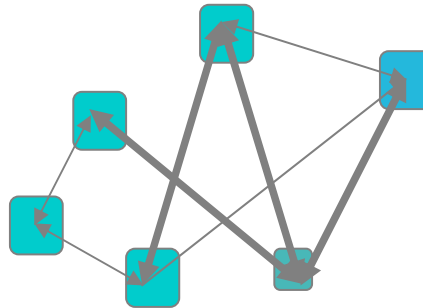


The « BI Initiative » : A Business Ecosystem at Work



VISION & GOALS

OS Business Intelligence qualification
BI investigation and research
Use cases and best practices

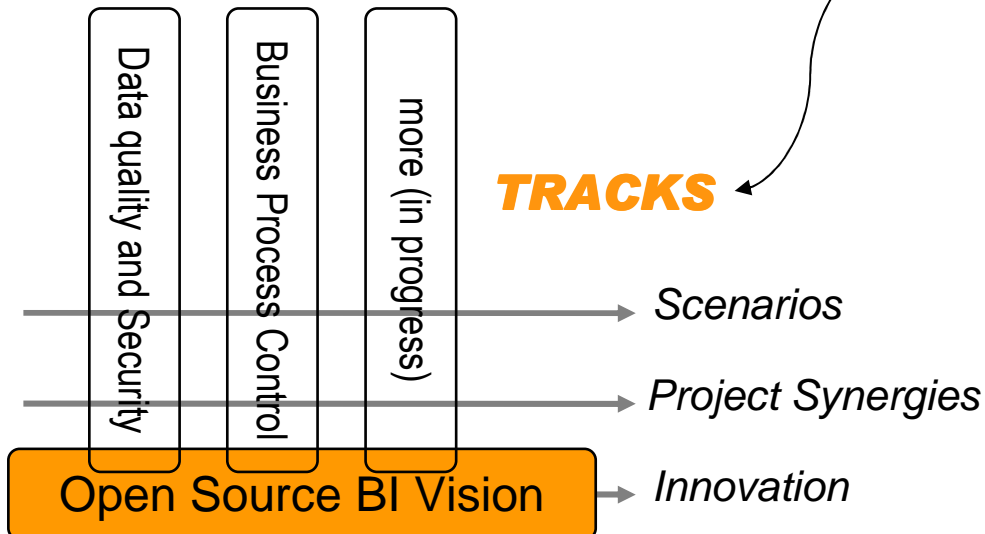


STAKEHOLDERS

Software Vendors
Systems Integrators
Academia
Enterprises
SMEs
Public Entities
Consultants

Open Source BI Business Ecosystem

TRACKS



**OW2
CODE BASE**



BI Initiative **PARTICIPANTS**

- Engineering Ingegneria Informatica (Italy) (www.eng.it)
- Talend (France) (www.talend.com)
- Ingres (US, France) (www.ingres.com)
- Altic (France) (www.altic.org)
- Artemis Information Management (Luxembourg) (www.artemis.lu)
- ClaraVista (www.claravista.fr)
- DEIS University of Bologna (Italy) (www.deis.unibo.it)
- DTI University of Milan (Italy) (www.dti.unimi.it)
- DISI University of Trento (Italy) (www.disi.unitn.it)
- Individual members (fl@flet.fr)

BI INITIATIVE MANIFESTO

- **Why the BI Initiative**
- **Objectives**
- **Main Activities**
- **Main Topics**
- **Deliverables**

WE LEFT IN PCL 2008 ...



COMING SOON

...with first deliverables

CURRENT ACTIVITIES

□ OS BI State of the Art

- BI Initiative vision about OS BI
- Open methodologies and OS tools for BI

□ OS BI Research Issues

- Main research issues in BI field
- How OSBI can answer

□ End user scenarios definition

- Statistical data management
- CRM

□ Technical track

- Talend – SpagoBI synergies
- Ingres – SpagoBI bundle

FIRST DELIVERABLES

Technological deliverable

- ❑ **Dec 2009:** SpagoBI and Talend integration
- ❑ **Jan 2009:** SpagoBI – Ingres bundle

Non-technological deliverables (White papers)

- ❑ **Final draft:** OS BI: Open Research Issues
- ❑ **Jan 2009:** OS BI: Open Source Alternatives

Non-technological deliverables (End-user scenario)

- ❑ **Final draft:** Statistical Data Life Cycle Management
- ❑ **Jan 2009:** End user scenario for OSBI: CRM

SPAGOBI – INGRES BUNDLE



- ❑ **Simple and quick installation of all required components for a Business**

Intelligence Solution

- ❑ **Provides a comprehensive OS platform aimed at delivering state of the art BI applications**

- ❑ **Best of breed approach**

- Mission critical enabled RDBMS (optimized, pre-configured)
- Comprehensive and advanced featured BI modules from ETL to Analysis
- Full featured demo application

- ❑ **Helps focusing on true business requirements, not infrastructure**

- Deploy in 10 minutes, keep workload on application value

- ❑ **Work ongoing by Engineering II and Ingres**

- ❑ **Bundles will be provided for Linux and Windows platforms**

SPAGOBI – TALEND INTEGRATION

Demonstrator

- 2 VM (Linux Debian, Windows)
- Talend Open Studio
- Talend Open Profile (data quality)
- SpagoBI

Tutorials

- Step by step document to run the demonstrator
- Recorded demonstration

Other initiatives

- Webinars, promotions, events
- Distant learning

OS BI: Open Research Issues

Commercial platforms are commonly considered superior to OS platforms
but ...

- ❑ OS BI platforms will evolve much faster than commercial ones since they are not constrained by compatibility problems and rigid architectures.
- ❑ OS solutions can exploit the contributions of hundreds of programmers and designers as well as on the direct involvement of researchers that are willing to prototype on free platforms.
- ❑ OS solutions should not only replicate commercial functionalities with lower costs for the final users, but should also propose innovative functionalities according to the most sophisticated requirements of business users.
- ❑ Many research topics can be effectively implemented on OS platforms giving rise to innovative functionalities:
 - ✓ Evolution and versioning in DW schema
 - ✓ User preferences in OLAP queries
 - ✓ Pervasive and distributed BI
 - ✓ OLAM (On Line Analytical Mining) systems

OS BI: Open Source BI Adoption



- ❑ As increasing licensing costs, OSBI (Open Source Business Intelligence) platforms have been gaining attention
- ❑ COSS companies have developed and imposed the concept of dual licensing
 - ✓ drive and manage the OS community to produce free high-quality products
 - ✓ offer and advanced customers service or additional features to those users who accept to pay the cost
- ❑ Dual licensing for OSBI products is seen as a guarantee of quality of the released software
- ❑ The deliverable presents an architectural view of OSBI platforms and discuss their adoption in some real world application scenario

Statistical Data Life Cycle Management

Analysis of user needs and assessment of existing OS BI tools with particular regard to:

- Quality control
- Confidentiality treatment
 - Statistical analysis
 - Metadata management
- Diffusion and publication

Conclusions

Mid-term opportunities: strengthen the first generation of OS BI platforms

Long-term opportunities: foster the new generation of OS BI platforms

<http://www.ow2.org/view/BusinessIntelligence/>